

# Light Of The World (Sing Hallelujah)

(based on the recording by We The Kingdom)

Words and Music by  
Andrew Bergthold, Ed Cash,  
Franni Cash, Martin Cash and Scott Cash

♩=108

## VERSE 1 & 2

Bm<sup>7</sup>

G<sup>2</sup>

A<sup>(4)</sup>

Bm<sup>7</sup>



1. Light of the World, Treas - ure of Heav - en, bril - liant like the  
2. Light of the World, from the be - gin - ning the trag - e - dies of

6

G<sup>2</sup>

A<sup>(4)</sup>

Bm<sup>7</sup>

D/F#

G<sup>2</sup>



stars in the win - ter - y sky. Joy of the Fa - ther,  
time were no match for Your love. From great heights of glo - ry,

11

A<sup>(4)</sup>

Bm<sup>7</sup>

G<sup>2</sup>

A<sup>(4)</sup>



reach through the dark - ness, shine a - cross the earth, send the shad - ows to —  
You saw my sto - ry. God, You en - tered in and be -

## TURNAROUND 1

16

Bm<sup>7</sup>

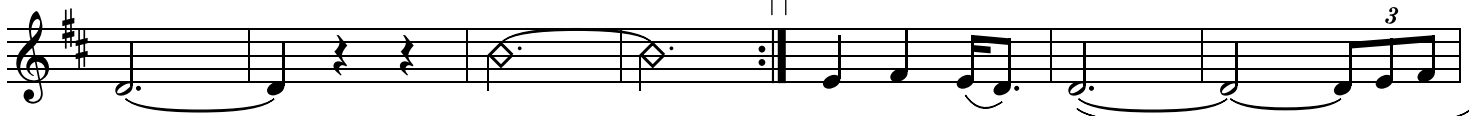
G<sup>2</sup>

A<sup>sus</sup>

2.

A<sup>(4)</sup>

G<sup>2</sup>



flight. — came one of — us.

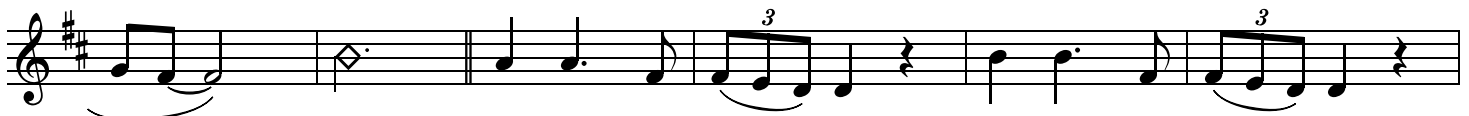
## CHORUS

23

D

D/C#

Bm



Sing hal - le - lu - jah, sing hal - le - lu - jah.

Light Of The World (Sing Hallelujah) - 2

29 G D A<sup>(4)</sup> D

Sing hal - le - lu - jah for the things \_ He has \_ done! Come and a -

34 D/C# Bm G

-dore \_\_\_ Him, bow down be - fore \_\_\_ Him. Sing hal - le - lu - jah to the

TURNAROUND 2

39 D A<sup>(4)</sup> Bm A/C# D G<sup>2</sup> A<sup>(4)</sup> Bm

Light \_ of the \_ World.

VERSE 3

45 Bm<sup>7</sup> G<sup>2</sup> A<sup>(4)</sup> Bm<sup>7</sup>

3. Light of the World, crown in a man - ger, born \_ for the

50 G<sup>2</sup> A<sup>(4)</sup> Bm<sup>7</sup> D/F# G<sup>2</sup>

cross, to suf - fer, to \_\_\_ save. High King of Heav - en,

55 F#7/A# Bm G<sup>2</sup> A<sup>(4)</sup> G<sup>2</sup>

death is the poor - er. We \_ are the rich - er by the price that He \_ paid.

CHORUS

61 D D/C# Bm G

Sing hal - le - lu - jah, sing hal - le - lu - jah. Sing hal - le -

67 D A<sup>(4)</sup> D D/C#

-lu - jah for the things \_ He has \_ done! Come and a - dore \_\_\_ Him,

72 Bm G D

bow down be - fore \_\_\_ Him. Sing hal - le - lu - jah to the Light \_ of the \_

**TURN. 2 / OUTRO**

77 A<sup>(4)</sup> Bm A/C# D G<sup>2</sup> A<sup>(4)</sup> Bm A<sup>(4)</sup> Bm

4th time to Coda ⊕

1, 3.

2.

World. \_\_\_

**VERSE 4**

84 Bm<sup>7</sup> G<sup>2</sup> A<sup>(4)</sup> Bm<sup>7</sup>

4. Light of the World soon will be com - ing. With fire \_ in His

89 G<sup>2</sup> A<sup>(4)</sup> Bm<sup>7</sup> D/F# G<sup>2</sup>

eyes, He will ran - som His \_ own. Through clouds He will lead us

94 F#<sup>7</sup>/A# Bm G<sup>2</sup>

straight in - to glo - ry. And there \_ He shall reign

98 A<sup>(4)</sup> G<sup>2</sup> D.S. al Coda

for - ev - er - more, \_\_\_ for - ev - er - more. \_\_\_

⊕ Coda

103

A<sup>(4)</sup>

D

Musical notation for a Coda section. The notation is on a single staff with a treble clef and a key signature of two sharps (F# and C#). The first measure contains a quarter note on the G line (A<sup>4</sup>) with a fermata above it. The second measure contains a quarter note on the D line (D) with a fermata above it. The piece ends with a double bar line.